

ALL TOP STITCHING IS 1/4" SNTS UNLESS OTHERWISE NOTED

HENLEY COLLAR:

- 1" NECK BAND W/ SNES
- 1" PLACKET WITH 1/4" BOX STITCH

SHOULDER SEAM:

- NO VISIBLE TOPSTITCHING

DROP SHOULDER ARMHOLE SEAM:

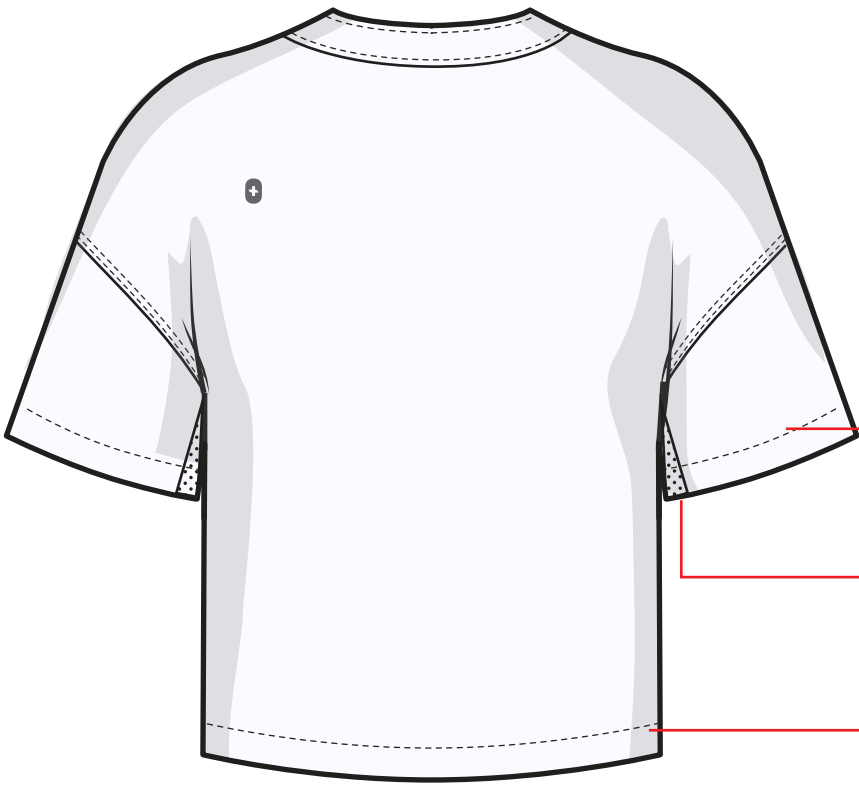
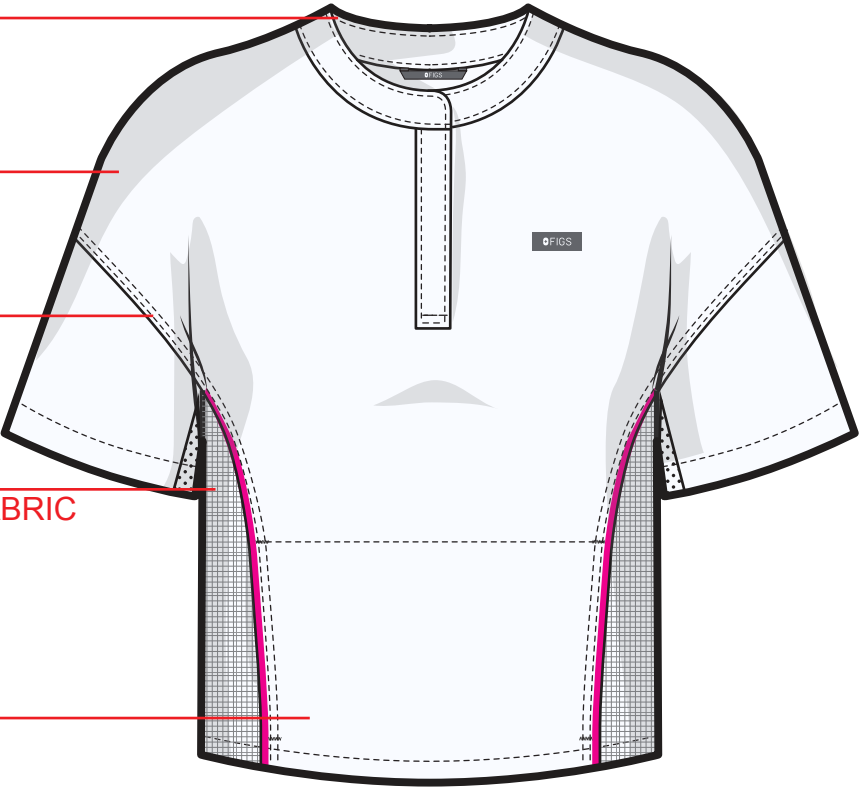
- 1/4" DNTS

CURVED CONTRAST PANEL:

- MESH OVERLAY ON TOP OF SELF FABRIC
- PANEL STARTING AT UNDERARM
- CONTRAST PIPING ALONG SEAM
- 1/4" DNTS

KANGAROO POCKET:

- OPENING AT SEAM
- HORIZONTAL BARTACKS AT ENDS
- HORIZONTAL STITCH AT TOP TO SECURE POCKET BAG



SLEEVE HEM:

- 1" TURNBACK W/ SNTS

UNDERARM GUSSET:

- CONTRAST PERFORATED FABRIC
- NO VISIBLE TOPSTITCHING

HEM:

- 1" TURNBACK W/ SNTS

V-NECK:

- 1/2" INTERIOR SELF FACING ALONG NECK W/ 1N 301 STITCH

SHOULDER SEAM AND ARM HOLE SEAM:

- NO VISIBLE TOPSTITCHING

ARM HOLE:

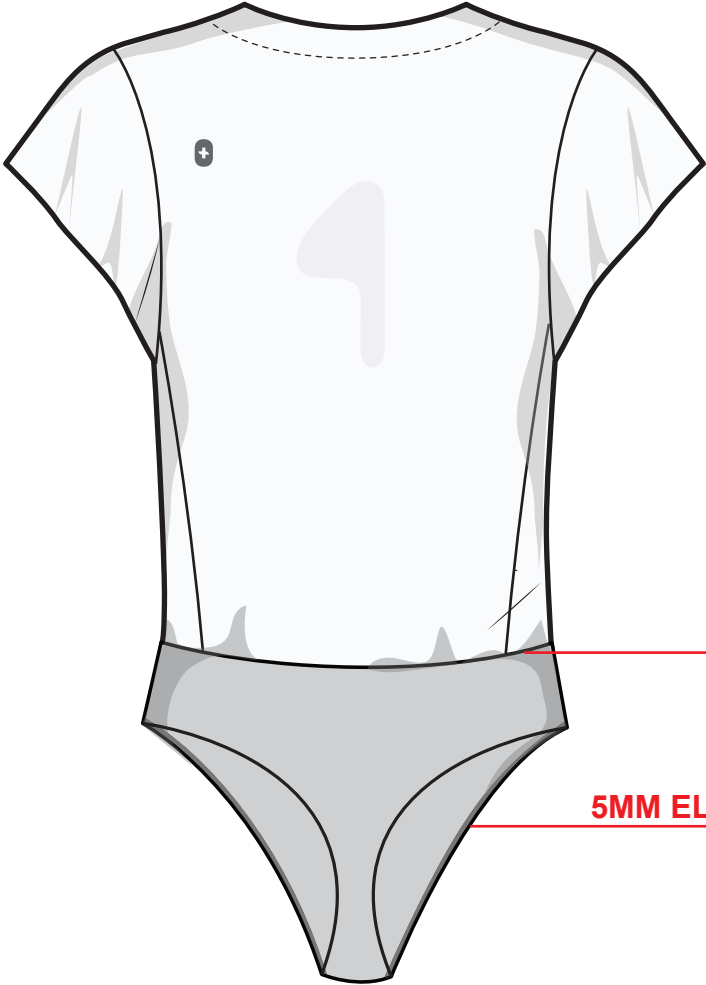
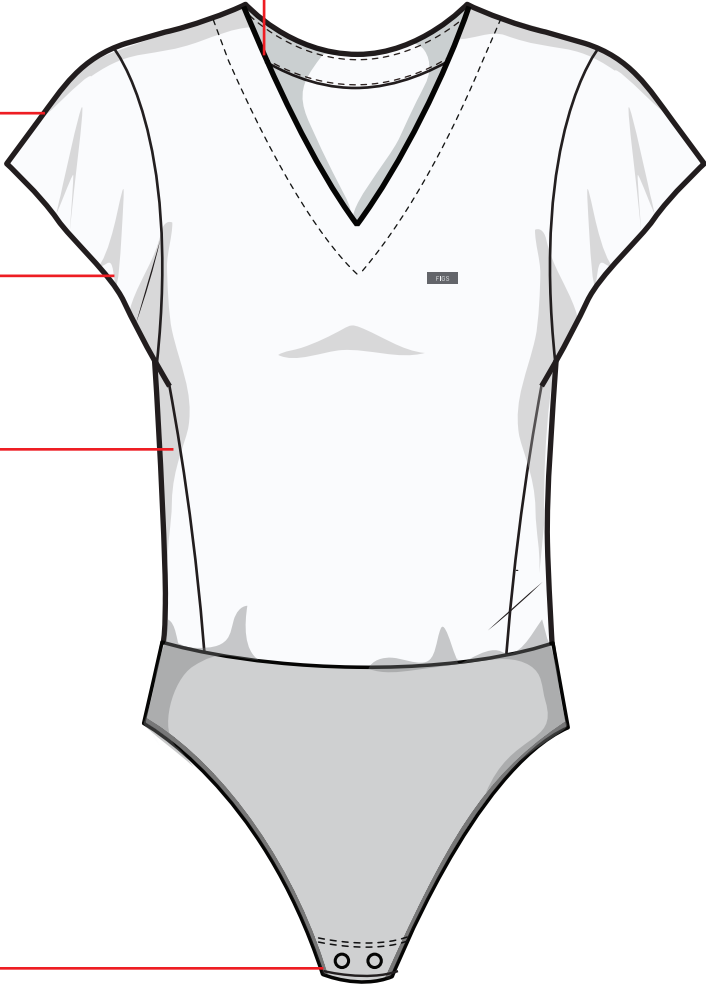
- TURNBACK AND BONDED AT INTERIOR

SELF PANEL:

- NO VISIBLE TOPSTITCHING

2X BABY SNAP CLOSURE:

- FOLDED FOR REINFORCEMENTS



WOVEN/KNIT JOIN SEAM:

- 514, SPI 16

5MM ELASTIC (WO1013) + COVERSTITCH TO FINISH

WAISTBAND:

- SELF RUFFLE WAISTBAND
- 2 PLY RIB BAND W/ DRAWCORD TUNNEL
- DRAWCORD EXITS THROUGH RIB
- 1/4" 1N 301 TOPSTITCH ALONG WAIST OPENING

HAND POCKETS:

- SNTS W/ BARTACKS AT OPENING
- *NOTE: WL INTERIOR POCKET BAG HAS 'POCKET IN POCKET'

ZIPPER POCKET:

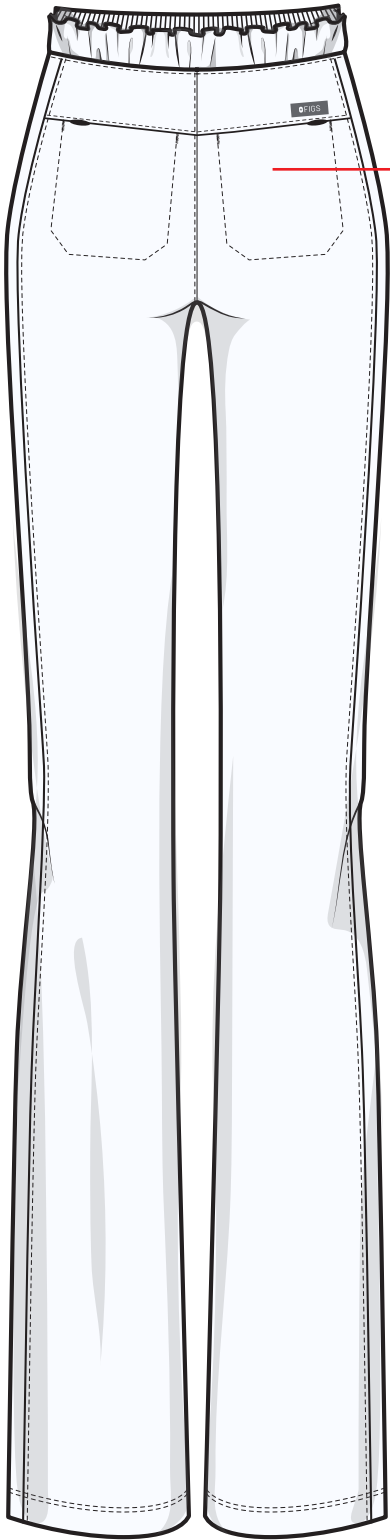
- INVISIBLE ZIPPER ALONG PANEL SEAM
- HORIZONTAL BARTACKS AT ENDS

PANEL SEAM:

- 1/8" 1N 301 TOPSTITCH

HEM:

- 1 1/2" TURNBACK W/ 2N 301 TOPSTITCH

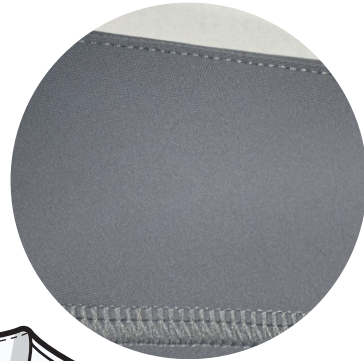


BACK YOKE:

- SHAPED YOKE W/ 1/8" 1N 301 TOPSTITCH
 - ZIPPER POCKETS ALONG YOKE
 - INVISIBLE ZIP CLOSURE
- VERTICAL BARTACKS AT POCKET OPENING
 - MITERED SHADOW STITCHING

V-NECK / FACING:

- INTERIOR 2" SELF FACING W/ 1/16" 1N 301 ALONG JOIN SEAM
- OVERLOCK STITCH AT THE BOTTOM OF FACING (SEE IMAGE)



SHOULDER SEAM:

- NO VISIBLE TOPSTITCHING

HEM:

- 1/4" TURNBACK W/ 1N 301 TOPSTITCH

SELF PLACKET:

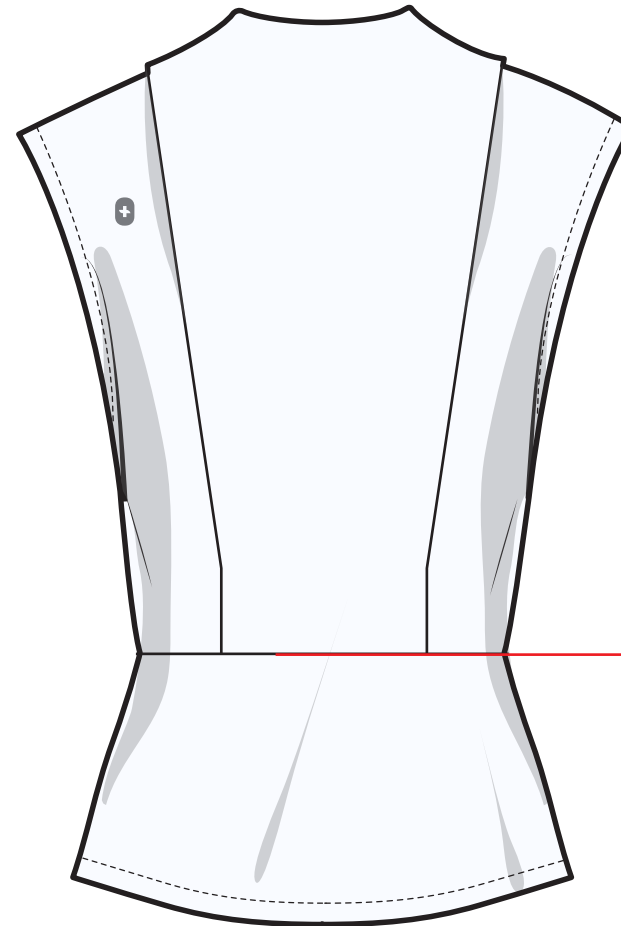
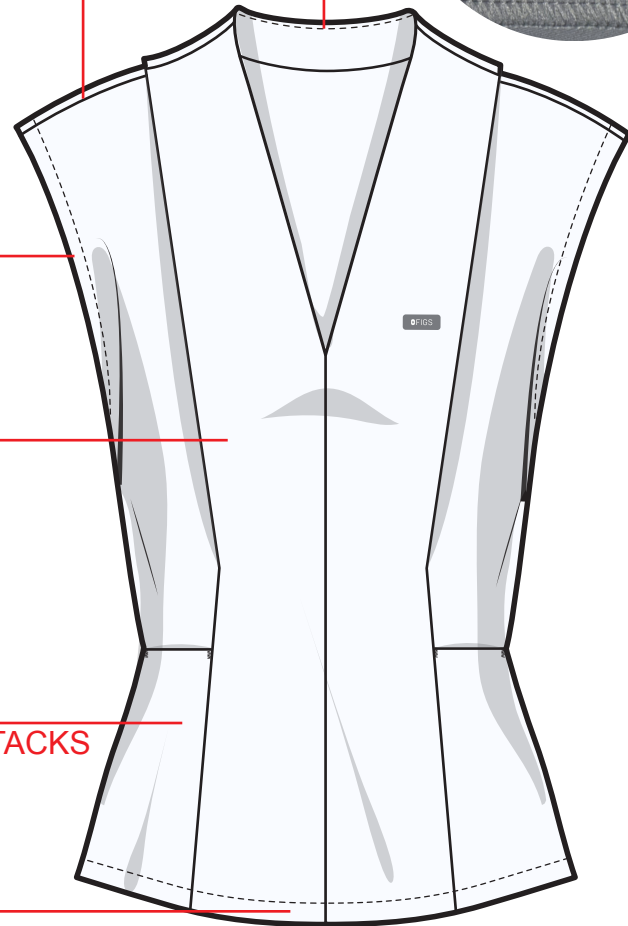
- NO VISIBLE TOPSTITCHING
- RELEASES UP FROM LOWER BUST

DROP POCKETS:

- CLEAN FINISH OPENING W/ VERTICAL BARTACKS
- FROM SIDE SEAM TO PLACKET SEAM

CURVED HEM:

- 1/2" TURNBACK W/ 1N 401 TOPSTITCH

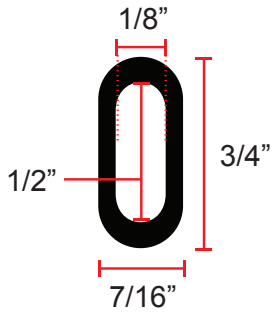


WAIST SEAM:

- NO VISIBLE TOPSTITCHING

WAISTBAND:

- ENCASED ELASTIC YOGA WAISTBAND
- INTERIOR 3/4" DC TUNNEL W/ SNCS 401 & BARTACK AT INTERIOR CB
- DRAWCORD AND BONDED TPU EXIT



HAND POCKETS:

- WELT SET UNDER PLEAT W/ 1/16" 301 & HOR. BARTACKS
- *NOTE: WL INTERIOR POCKET BAG HAS 'POCKET IN POCKET'

PINTUCKS:

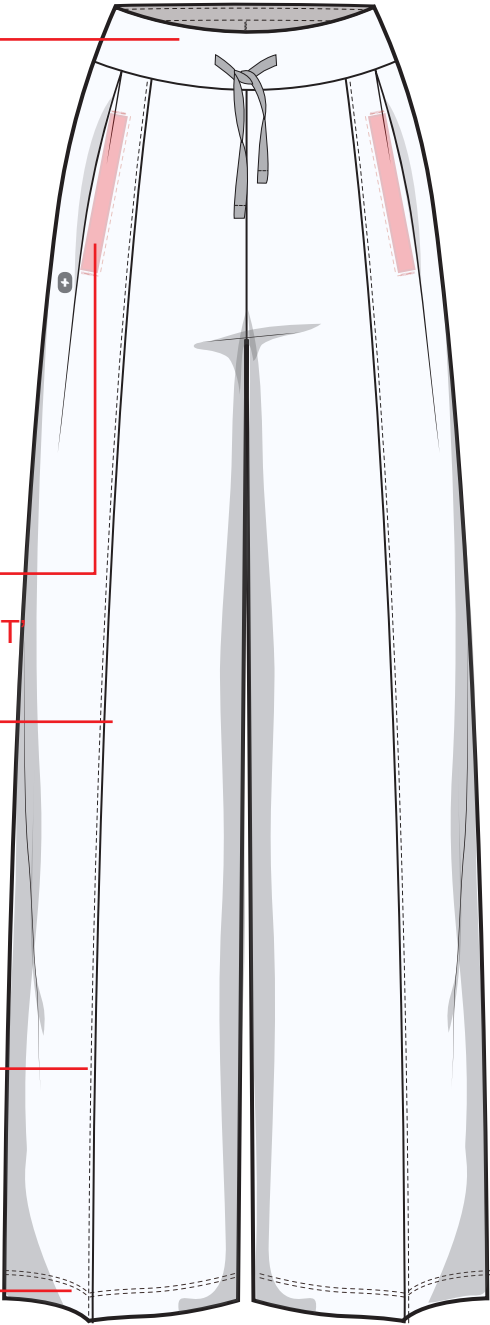
- 1/16" 1N 301

PANEL SEAM:

- 1/8" 1N 301 TOPSTITCH

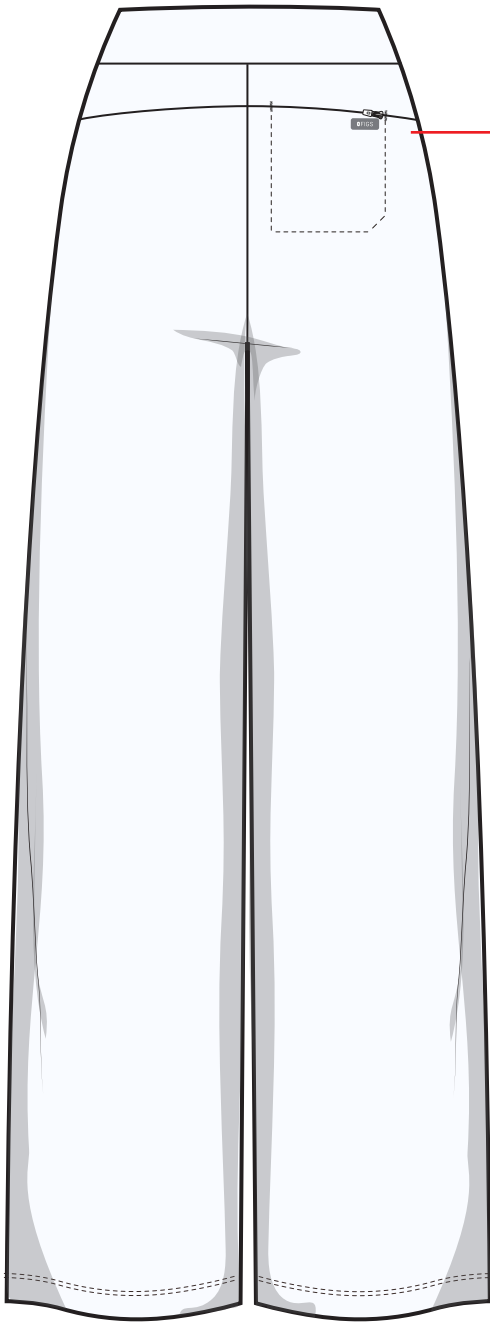
HEM:

- 1" TURNBACK W/ 1/4" 406

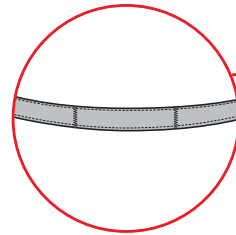


BACK YOKE:

- INVISIBLE ZIP POCKET ENTRY ON WR
 - 1/4" BARTACK REINFORCEMENT
- SNCS (401) SHADOW STITCH AT BACK POCKET



BACK NECK TAPE LOCKER LOOP



SELF MOCK NECK COLLAR:

- 2 PLY COLLAR W/ SELF FACING AND 1/16" 301 AT INTERIOR
- BACK NECK TAPE FROM HPS TO HPS W/ 1/16" 301

SHOULDER SEAM:

- 1/8" 1N 301 TOPSTITCH

EXPOSED REV. COIL ZIP:

- SNAKE BITE AT TOP OF ZIPPER
- 1/16" 301 TOPSTITCH
- ZIP GARAGE AT END

FRONT YOKE:

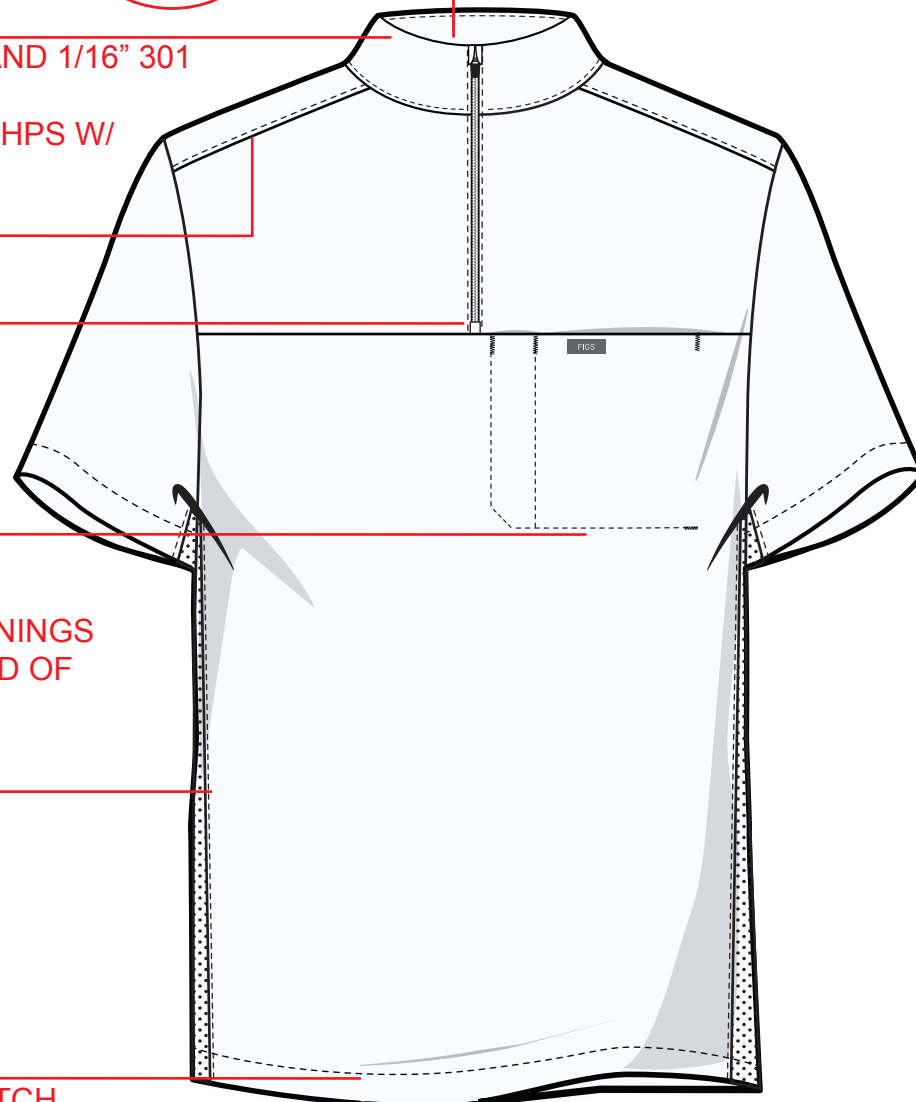
- NO VISIBLE TOPSTITCHING
- CHEST POCKET W/ PEN INSERT
 - VERTICAL BARTACKS AT OPENINGS
 - HORIZONTAL BARTACK AT END OF MITERED SHADOW STITCHING

PERFORATED PANEL:

- 1/8" 1N 301 TOPSTITCH

BODY & SLEEVE HEM:

- 1" TURNBACK W/ 1N 301 TOPSTITCH

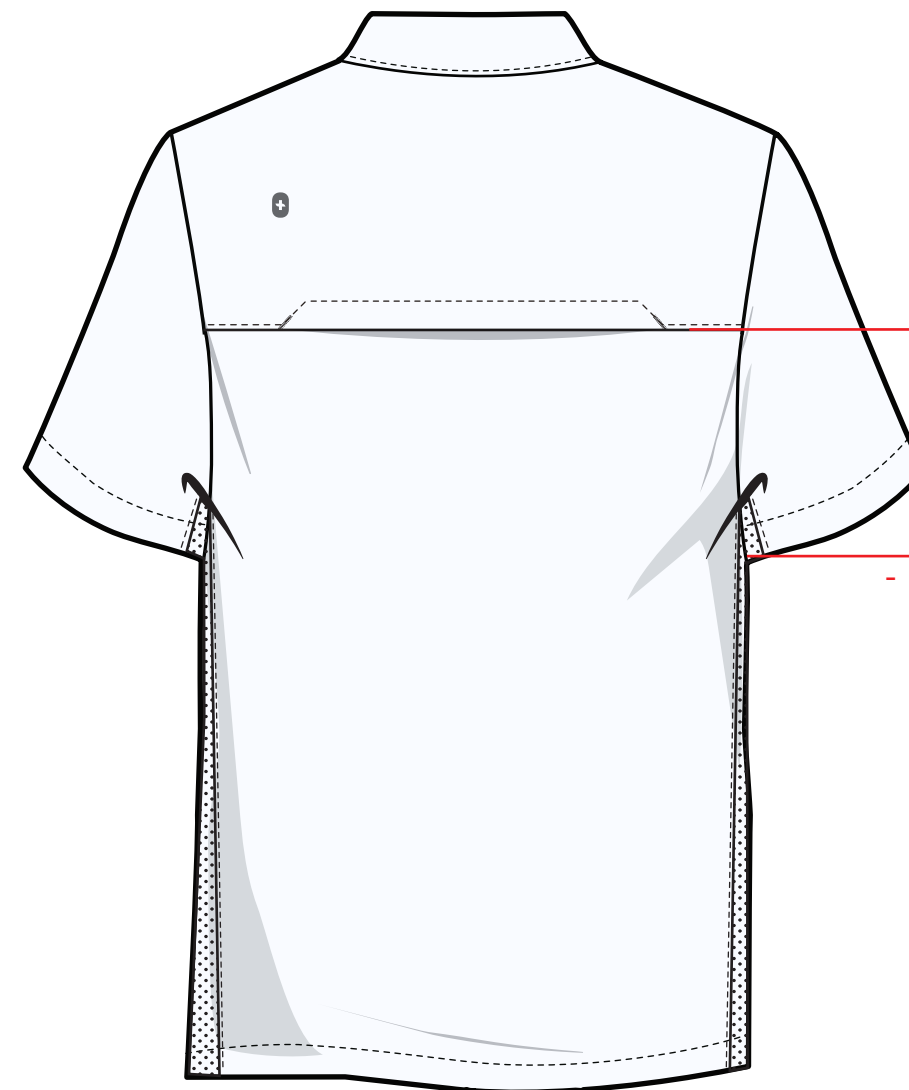


REVERSE ENTRY VENT YOKE:

- 1/8" 1N 301 TOPSTITCH W/ ANGLED BARTACKS
- PERFORATED FABRIC UNDER FLAP

UNDERARM GUSSET:

- 1/8" 1N 401 TOPSTITCH AT JOIN SEAM



WAISTBAND:

- SELF ELASTICATED WAISTBAND
- 5/8" DRAWCORD TUNNEL W/ 401 CHAINSTITCH
- BUTTON HOLE DRAWCORD EXITS
- 1/16" 1N 401 AT WAISTBAND JOIN SEAM

ANGLED HIP POCKETS:

- 1/4" 1N 301 TOPSTITCH ALONG OPENING
 - HORIZONTAL BARTACKS AT TOP & BOTTOM
- *NOTE: WL INTERIOR POCKET BAG HAS 'POCKET IN POCKET'

J-STITCH:

- 1N 401 J STITCH
- HORIZONTAL BARTACK AT END

INSEAM

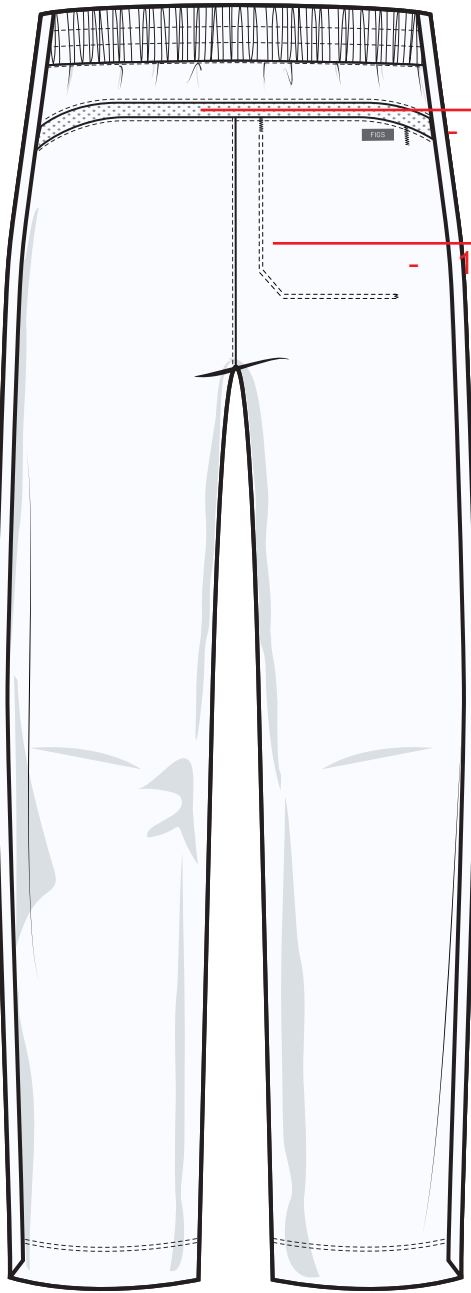
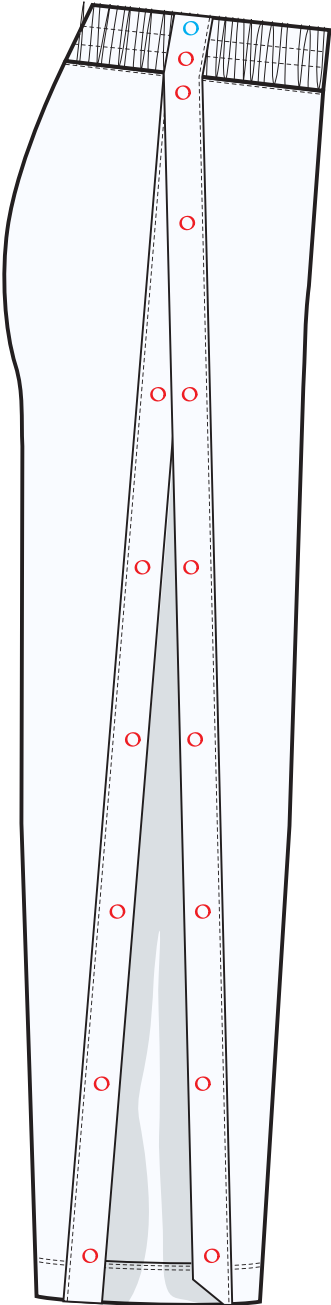
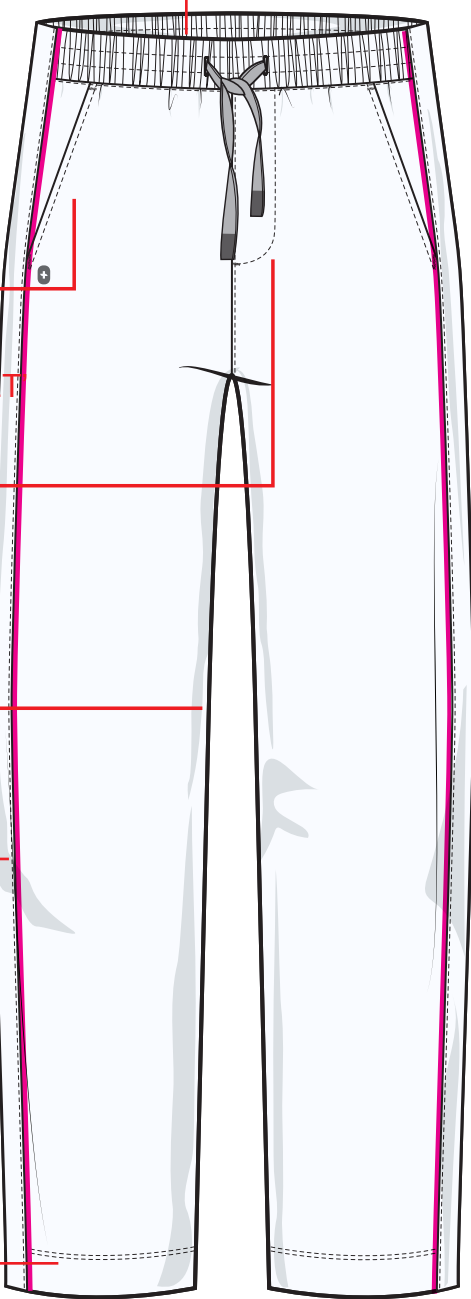
- NO VISIBLE TOPSTITCHING

TOP APPLIED SIDE PANEL PLACKET:

- 1 BUTTON W/ BUTTON HOLE AT WB (BLUE)
- EXPOSED SNAPS ALONG LEG (RED)
- 1/16" 1N 301 AT JOIN SEAM
- PIPING ALONG SEAM
- ANGLED AT THE BOTTOM

HEM:

- 1 1/2" TURNBACK HEM W/ 1/8" 2N 301 TOPSTITCH



PERFORATED PANEL:

- 1/16" 1N 301 ON TOP AND BOTTOM OF YOKE PANEL

BACK POCKET:

- 1/8" 2N 301 SHADOW STITCH WITH MITERED CORNER
- VERTICAL BARTACK AT END OF STITCH
- VERTICAL BARTACKS AT POCKET OPENING